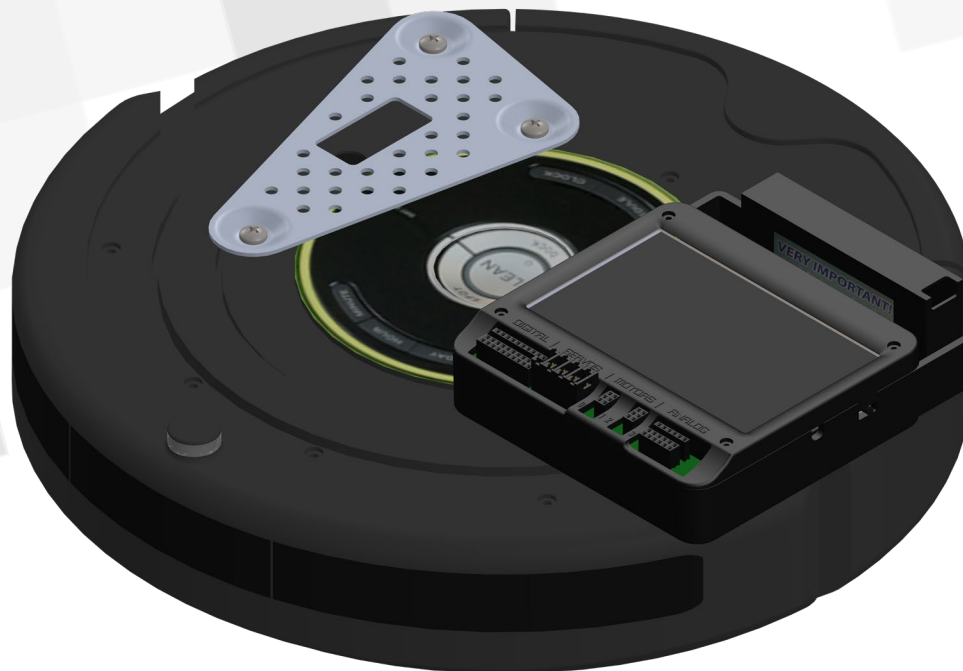
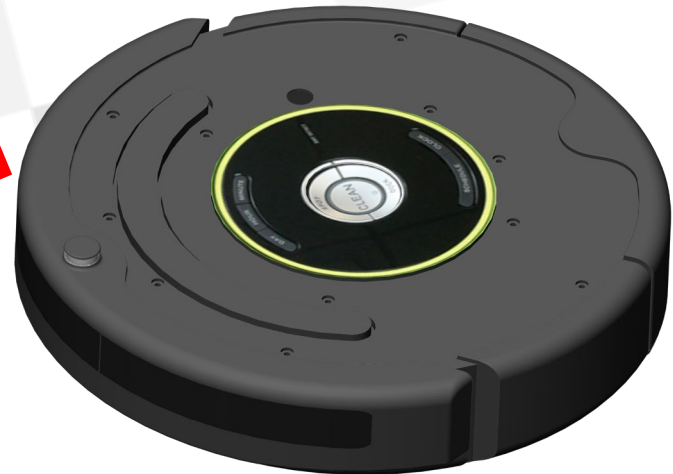
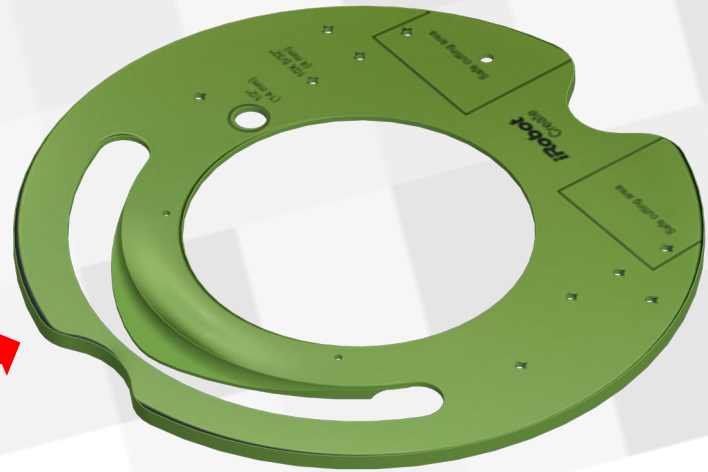


KIPR iRobot Create Wombat Controller Robot

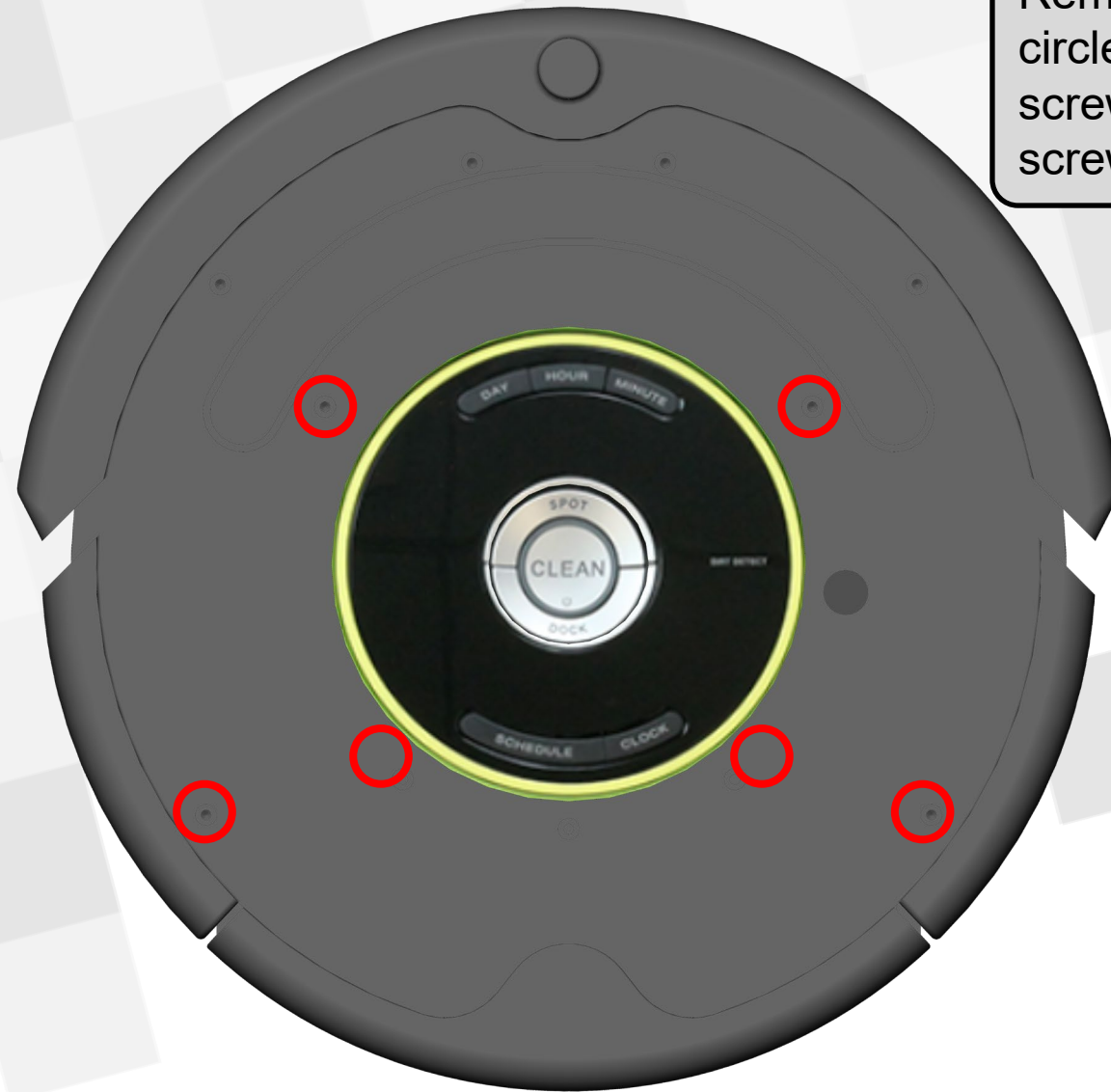
Please follow the slides to complete the assembly
of your Create robot

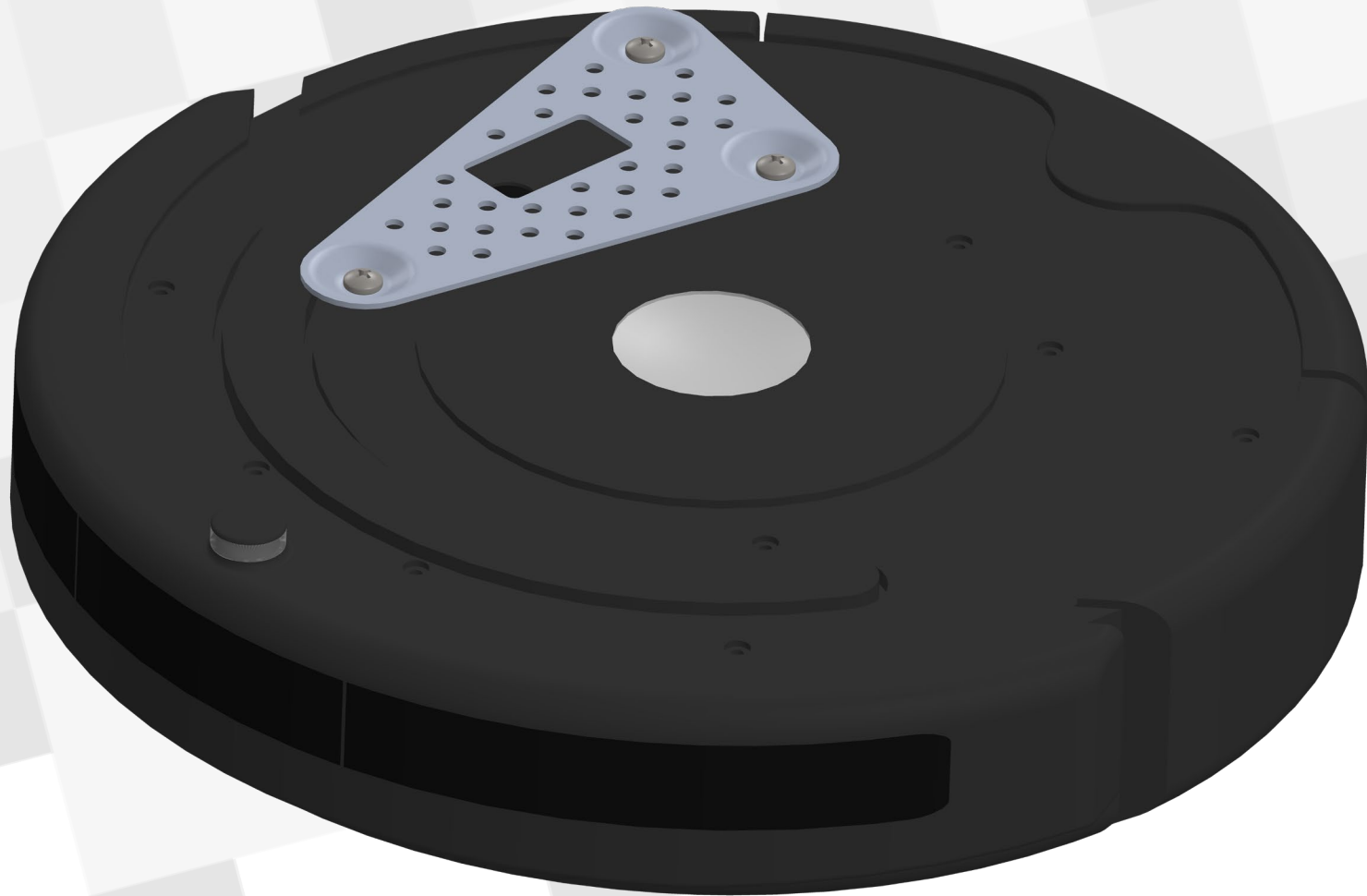


Remove the black or green top from the Create. This may take a little force.

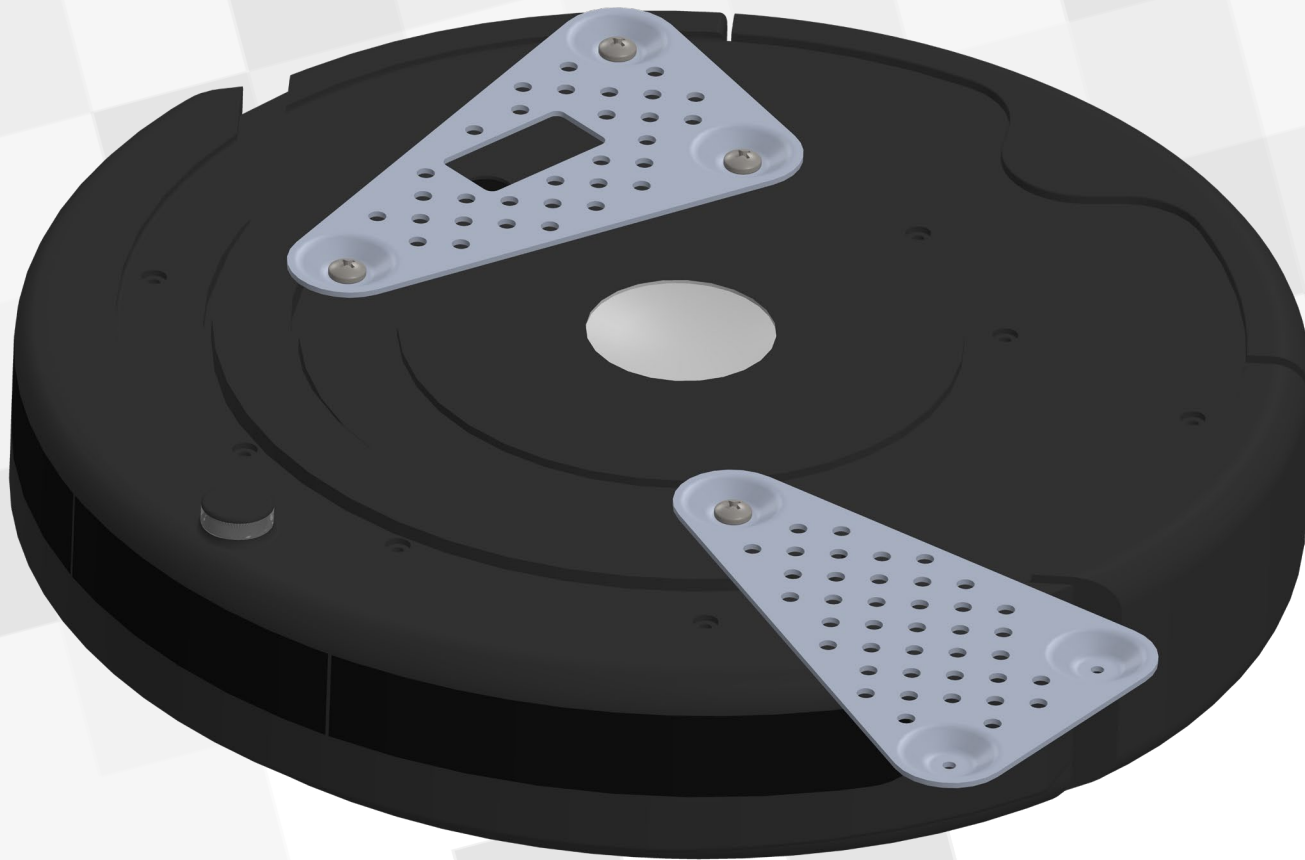


Remove the small screws in the circled holes and find the bag of screws in the electronics kit that has 6 screws that are similar but longer.

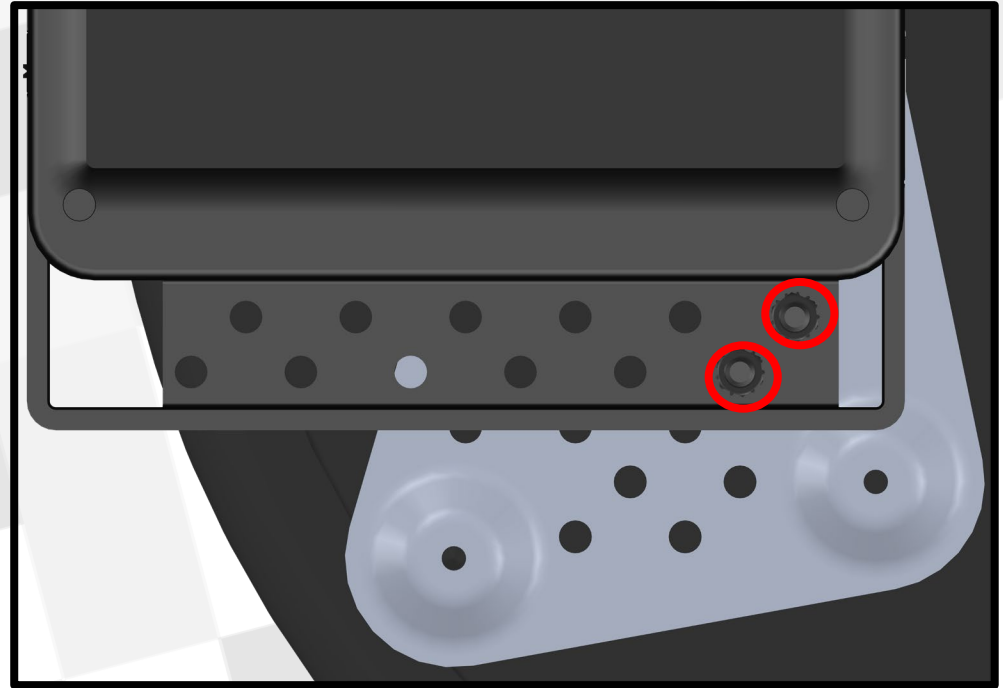
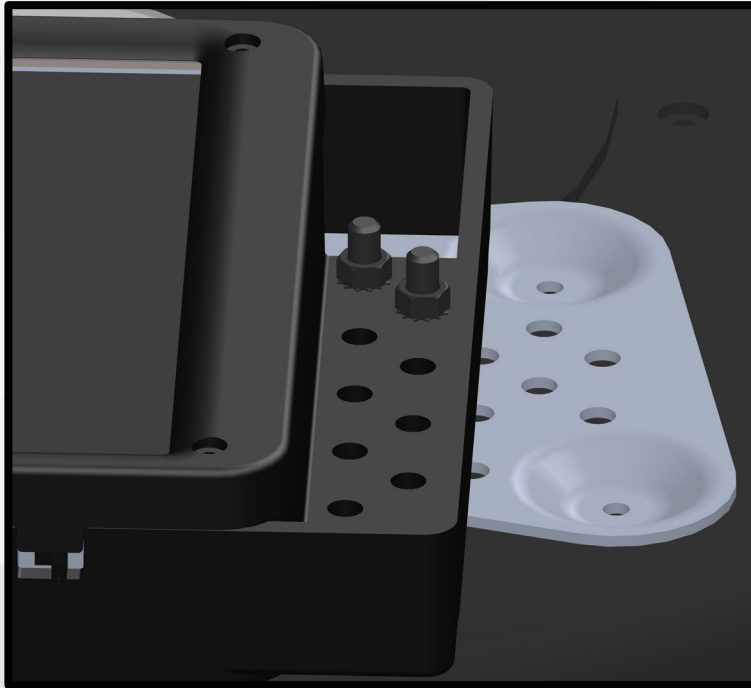




Attach the Create bracket with the large hole in it to the right side of the Create.



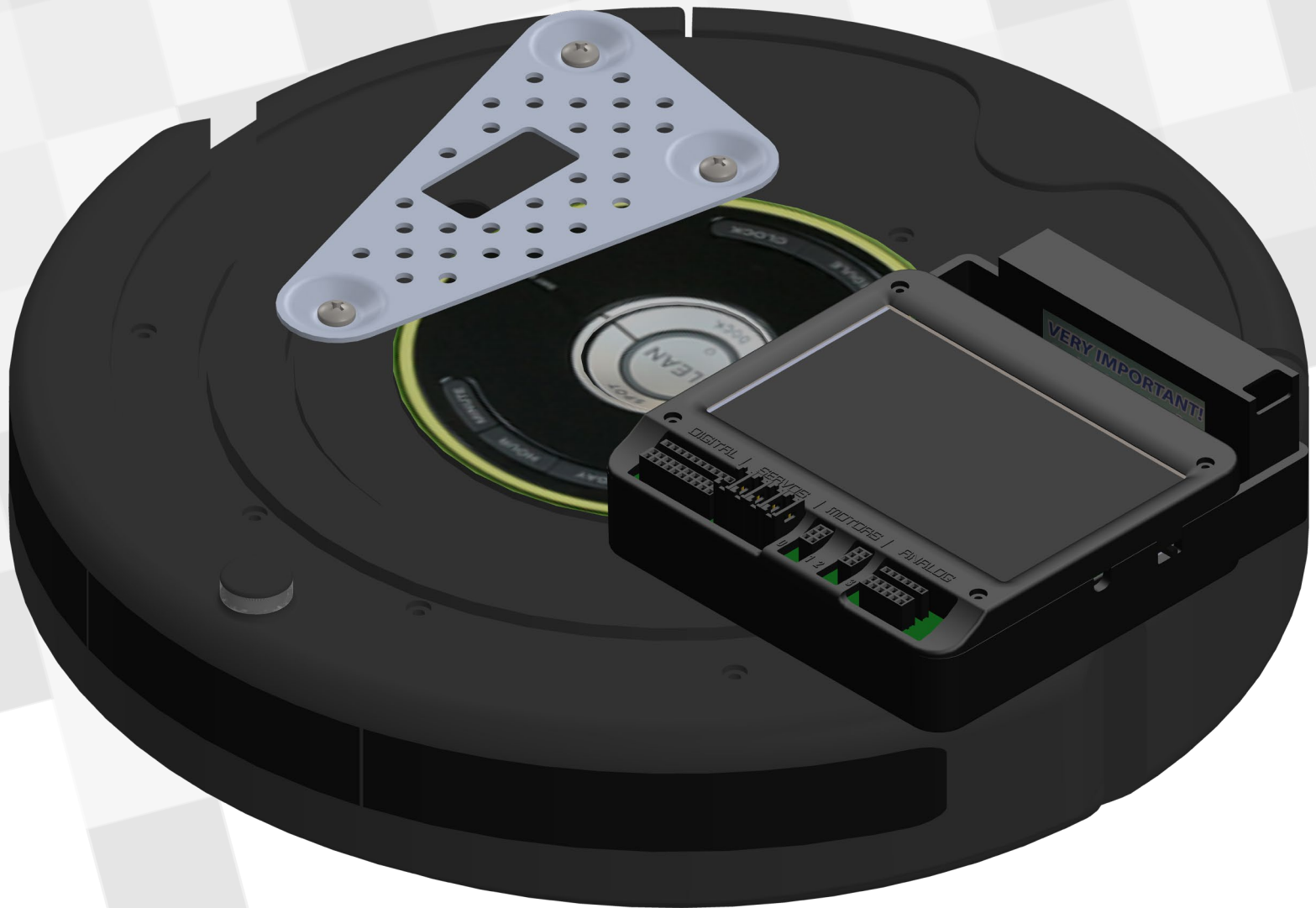
Attach the only the top hole of the other Create bracket to the left side of the Create and rotate it out away from the Create.



Using two medium bolts attach the Wombat to this Bracket as shown and then rotate the whole piece back towards the Create.



Finish attaching the Create bracket to the Create with the remaining Create screws.



Create robot finished!